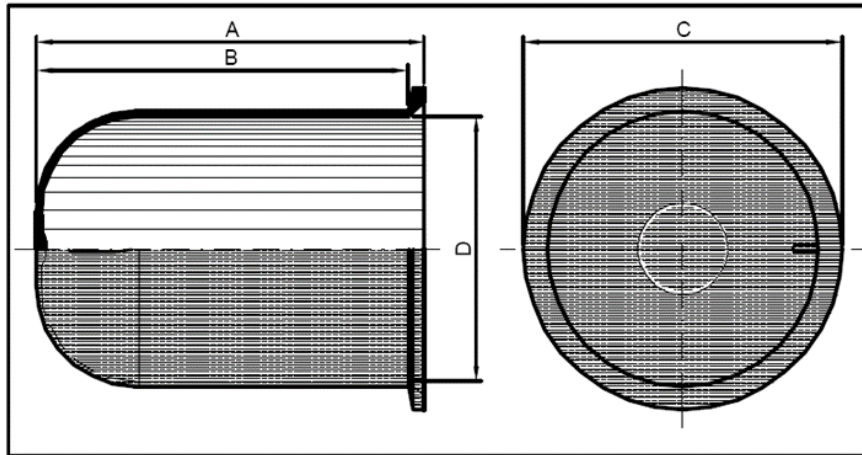


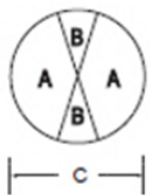
# DOMES RESIN CLOSURES

These Ready Access Jointing Closures (Model No.s 30A, 31A, and 32B) offer total environmental protection of sensitive telephone equipment. Constructed of non-corrosive, high performance polypropylene material, the closures have a jointing capacity of up to 500 pairs on cables of up to 56mm diameter. The resin-filled base can be used as an air block if required.



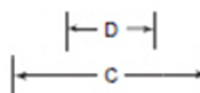
Dome Closure	Outside Length A	Inside Length B	Outside Diameter C	Inside Diameter
Sleeve 30	200mm +-	195mm +-	88mm	61mm
Sleeve 31	200mm +-	195mm +-	123mm	96mm
Sleeve 31 Extended	275mm +-	270mm +-	124mm	96mm
Sleeve 32	200mm +-	195mm +-	165mm	135mm
Sleeve 32 Extended	275mm +-	269mm +-	165mm	135mm

## 30A BASE

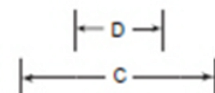


**STD Base**  
A = 17 max Ø cable  
B = 13 max Ø cable  
C = 55 int Ø base

## 32B BASES

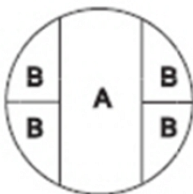


**STD Base**  
A = 54 max Ø cable  
B = 22 max Ø cable  
C = 129 int Ø base  
D = 64 int width



**Non STD Base**  
A = 60 max Ø cable  
B = 14 max Ø cable  
C = 129 int Ø base  
D = 82 int width

## 31A BASE



**STD Base**  
A = 32 max Ø cable  
B = 12 max Ø cable  
C = 90 int Ø base  
D = 40 int width

All dimensions in mm